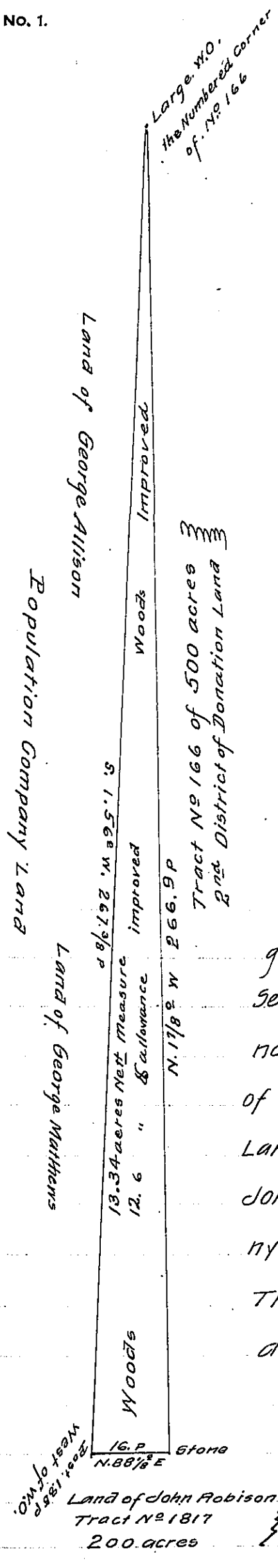


FORM NO. 1.



The Survey of this Draft was made on a Warrant granted to Samuel Cox dated May 13. 1853 for Seventeen acres of land in Mahoning Township Lawrence County Pa. Commencing at the numbered corner of Tract No. 166 of 500 acres in 2<sup>nd</sup> District of Donation Land. Bounded East by Donation Lot No. 166. South by John Robison & North & West by the Population Company Lands part improved. balance in woods  
 The Metes & bounds & Contents as marked on the draft. Survey made May 25. 1853

Henry Pearson  
 County Surveyor  
 Lawrence County Pa  
 June 30. 1853

To J. Porter Brawley Esq  
 Surveyor General

IN TESTIMONY that the above is a copy of the original remaining on file in the Department of Internal Affairs of Pennsylvania, made conformably to an Act of Assembly approved the 16th day of February 1833, I have hereunto set my hand and caused the Seal of said Department to be affixed at Harrisburg, this eighteenth day of December 1907

*Henry Howard*  
 Secretary of Internal Affairs.